



will you help?

ALPINE
ACADEMY



"...to build the lives of young women."



ALPINE ACADEMY is constructing a building for a Family & Consumer Studies classroom, therapy space and offices for the therapeutic staff.

It will be 3,400 square feet and will be located between the Crocker Education Center and the Gene Smith Home.

Like all Alpine Academy buildings, it will be beautiful. Like all Alpine Academy buildings, it will be built with one goal in mind—to build the lives of young women.

ALPINE ACADEMY YOUNG WOMEN receive individual and family therapy 2-3 times per week and group therapy up to 4 times a week. The therapy sessions are the most beneficial when they occur in a room that is quiet and private. Currently, the therapy sessions take place in the Crocker Education Center where space is limited and can be crowded and noisy.





"...strengthen a place of refuge & healing."

THE NEW BUILDING will also include a large Family & Consumer Studies classroom in which some of our most popular classes, such as sports fashion or culinary arts, will be taught. It will include two small kitchenettes and a number of sewing machines.

We estimate the construction will cost \$462,500. Construction has begun and will be completed as funds are available. With your help, that will be soon.

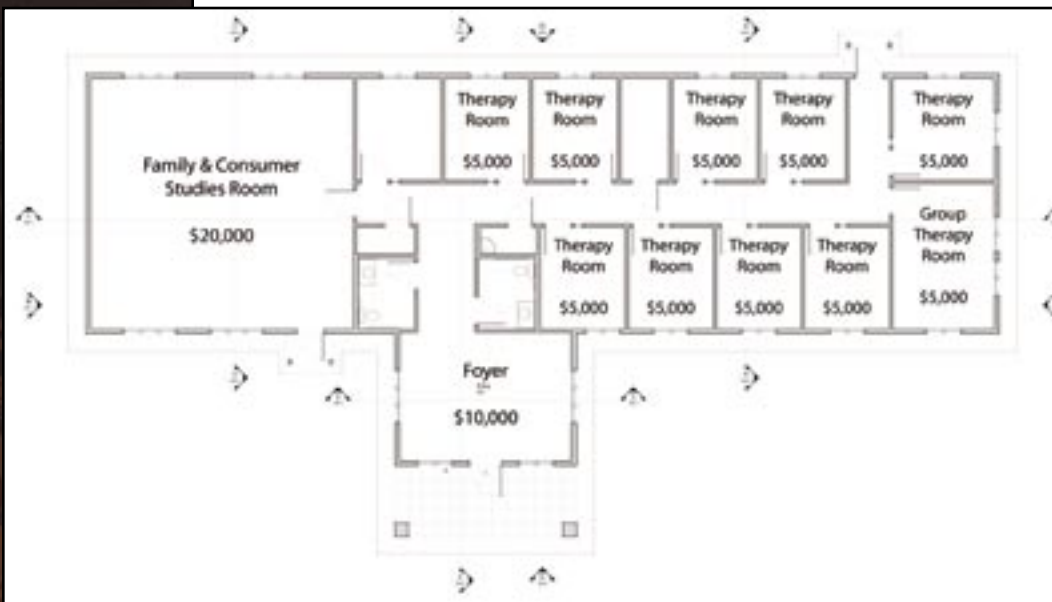




artist's rendering - therapy building



THERAPY ROOMS AND OFFICES can be underwritten and named for a \$5,000 donation; the larger Foyer for a \$10,000 donation; and the Family & Consumer Studies room for a \$20,000 donation. The building can be named for a donation of \$550,000.



floor plan & sponsorship levels

DONATIONS can be fulfilled over 2-3 years. They can come from many sources. For instance, to honor your daughter for the struggles she's overcome, you can enlist the help of grandparents, aunts and uncles, friends and neighbors to help put your daughter's name permanently in the Therapy Building.

Of course, gifts to Alpine Academy are tax-deductible. Alpine Academy is a subsidiary of Utah Youth Village, Utah's oldest and largest charity providing residential treatment to Utah foster children. By contributing to Alpine Academy, you not only strengthen a place where your daughter, and many like her, have found refuge and healing, you strengthen a place where innocent victims of abuse and neglect have found refuge and healing, also.

Please join us in building not just a building, but also young lives.



For More Information or to Donate

For more information, contact Helaine Sandler, Alpine Academy Outreach Coordinator, at (818) 917-4861; hsandler@youthvillage.org. Or Rebecca Heal, Development Director for Utah Youth Village, at (801) 308-1053; rheal@youthvillage.org.

Gifts can be mailed to Alpine Academy, 5800 South Highland Drive, Salt Lake City, UT 84121; gifts can also be made online at www.alpineacademy.org.

thank you so much!




ALPINE
ACADEMY

1280 Whispering Horse Drive
Erda, Utah 84074
(800) 244-1113
www.alpineacademy.org